

SMART  
STARTS  
HERE



**Remark™**

*Classroom Edition OMR Software*

Sample Reports

1-800-722-6876 [www.scantron.com](http://www.scantron.com)

Remark Classic OMR is a registered trademark of Gravic, Inc.

# Student Statistics Report

## Overall

Benchmark: 75.00%

Student	Overall (Includes Extra Credit)				Objective	Subjective	
	Grade	Scale Score	Total	Percent	Total	Total	
Donna Smalls	A	80	65.00 / 60.00	108.33	<div style="width: 100%; height: 10px; background-color: green;"></div>	45.00 / 40.00	20.00 / 20.00
Thomas Jones	C	64	46.00 / 60.00	76.67	<div style="width: 80%; height: 10px; background-color: green;"></div>	33.00 / 40.00	13.00 / 20.00
Rachel Marks	C	62	44.00 / 60.00	73.33	<div style="width: 75%; height: 10px; background-color: red;"></div>	34.00 / 40.00	10.00 / 20.00
Bill Brooks	B	70	53.00 / 60.00	88.33	<div style="width: 95%; height: 10px; background-color: green;"></div>	38.00 / 40.00	15.00 / 20.00
Emily Dodds	B	70	53.00 / 60.00	88.33	<div style="width: 95%; height: 10px; background-color: green;"></div>	35.00 / 40.00	18.00 / 20.00
Bob Lee	D	57	39.00 / 60.00	65.00	<div style="width: 60%; height: 10px; background-color: red;"></div>	34.00 / 40.00	5.00 / 20.00
Jonathan Finkel	B	67	50.00 / 60.00	83.33	<div style="width: 85%; height: 10px; background-color: green;"></div>	33.00 / 40.00	17.00 / 20.00
Mark Smith	C	60	42.00 / 60.00	70.00	<div style="width: 70%; height: 10px; background-color: red;"></div>	25.00 / 40.00	17.00 / 20.00
Jay Atkins	F	53	34.00 / 60.00	56.67	<div style="width: 55%; height: 10px; background-color: red;"></div>	29.00 / 40.00	5.00 / 20.00
Sean Wilson	B	67	50.00 / 60.00	83.33	<div style="width: 85%; height: 10px; background-color: green;"></div>	34.00 / 40.00	16.00 / 20.00
Linda Bayer	F	52	33.00 / 60.00	55.00	<div style="width: 50%; height: 10px; background-color: red;"></div>	28.00 / 40.00	5.00 / 20.00
Dan Fields	D	58	40.00 / 60.00	66.67	<div style="width: 65%; height: 10px; background-color: red;"></div>	30.00 / 40.00	10.00 / 20.00
Amy Johnson	D	55	37.00 / 60.00	61.67	<div style="width: 60%; height: 10px; background-color: red;"></div>	29.00 / 40.00	8.00 / 20.00
May Newcomb	A	71	55.00 / 60.00	91.67	<div style="width: 95%; height: 10px; background-color: green;"></div>	40.00 / 40.00	15.00 / 20.00
Greg Robinson	B	70	53.00 / 60.00	88.33	<div style="width: 95%; height: 10px; background-color: green;"></div>	36.00 / 40.00	17.00 / 20.00
James Yeager	C	62	44.00 / 60.00	73.33	<div style="width: 75%; height: 10px; background-color: red;"></div>	29.00 / 40.00	15.00 / 20.00
Catherine Campbell	C	64	46.00 / 60.00	76.67	<div style="width: 80%; height: 10px; background-color: green;"></div>	30.00 / 40.00	16.00 / 20.00
Meg Hunt	C	64	46.00 / 60.00	76.67	<div style="width: 80%; height: 10px; background-color: green;"></div>	36.00 / 40.00	10.00 / 20.00
Anthony Wales	C	63	45.00 / 60.00	75.00	<div style="width: 75%; height: 10px; background-color: green;"></div>	33.00 / 40.00	12.00 / 20.00
Lauren Brown	A	72	56.00 / 60.00	93.33	<div style="width: 95%; height: 10px; background-color: green;"></div>	40.00 / 40.00	16.00 / 20.00
Mean	C	-	46.55	77.58	<div style="width: 80%; height: 10px; background-color: green;"></div>	33.55	13.00

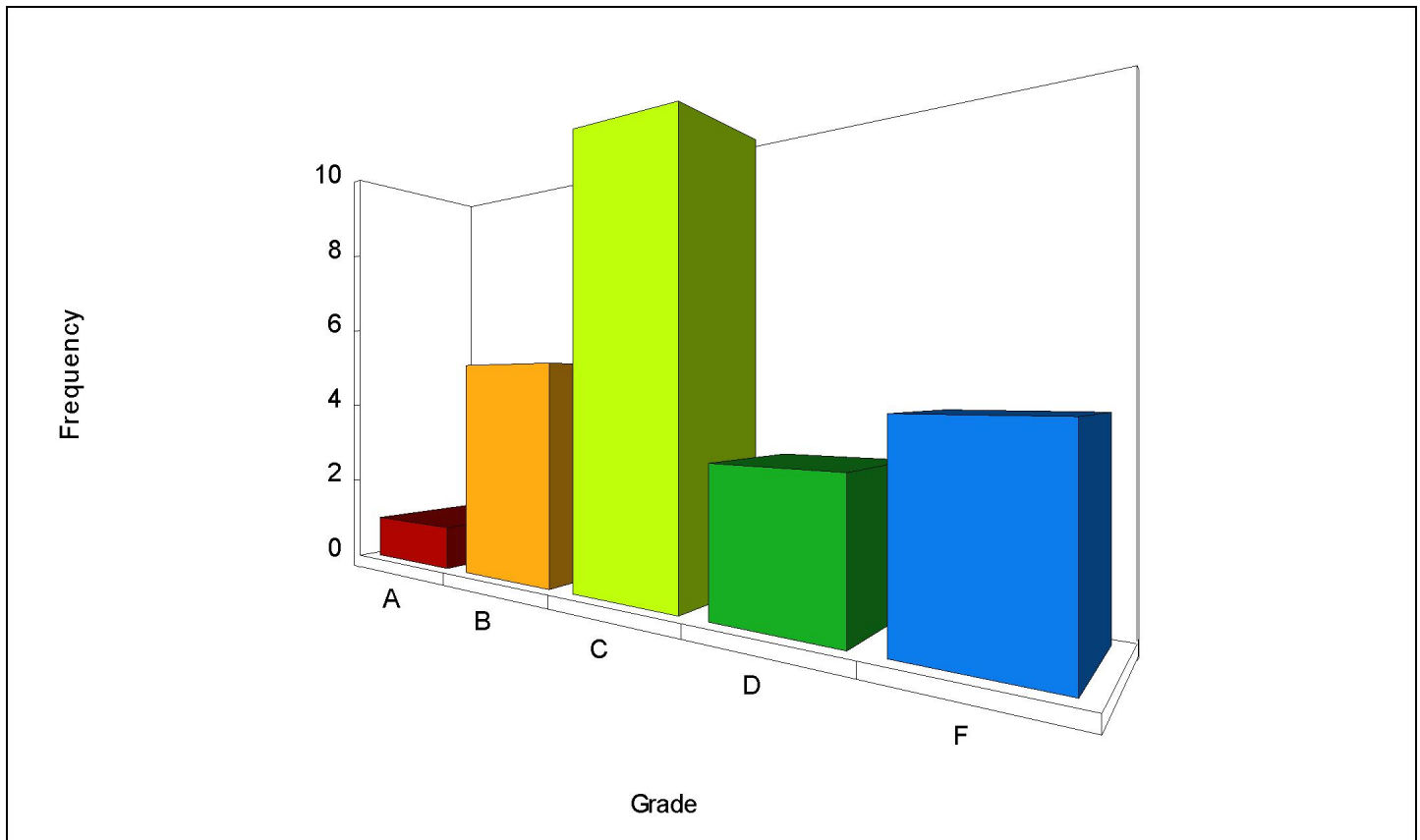
# Class Frequency Distribution Report

Overall

Mean Score: 68.48%



Grade	Percent Score	Raw Score	Frequency	Percent
A	90.00 - 100.00	18.00 - 20.00	1	4.35
B	80.00 - 89.99	16.00 - 17.99	5	21.74
C	70.00 - 79.99	14.00 - 15.99	10	43.48
D	60.00 - 69.99	12.00 - 13.99	3	13.04
F	0.00 - 59.99	0.00 - 11.99	4	17.39



# Student Response Report

**Legend:** Correct: ■ Incorrect: ■ Unanswered or Other Incorrect Response:

Students:	Question1	Question2	Question3	Question4	Question5	Question6	Question7	Question8	Question9	Question10	Question11	Question12	Question13	Question14	Question15	Question16	Question17	Question18	Question19	Question20	Total Score	Percent Score	Grade
<b>Answer Key:</b>	C	C	D	B	B	A	B	A	E	A	B	E	C	E	D	B	A	A	B	D	20	100.00	
Ted Reynolds	C	B	C	B	B	A	D	A	E	A	B	E	C	E	C	B	E	A	B	E	14	70.00	C
Scott Williams	B	C	D	E	A	C	C	A	A	A	E	A	E	E	D	A	A	C	B	D	9	45.00	F
Mary Hunsaker	C	C	D	B	B	A	B	A	D	A	B	E	C	E	D	B	A	A	B	D	19	95.00	A
Ted Motyka	C	B	E	A	B	B	B	A	B	A	B	E	C	E	D	B	A	A	B	D	15	75.00	C
Tyrone Shulman	C	C	D		B	A		A	E	A	B	E	C	B	D	B	D	A	B	D	16	80.00	B
Allan Romanelli	B	E	D	D	A	C	B	A	A	A	D	E	A	E	D	D	C	D	B	D	9	45.00	F
Lance Lewallen	C	A	D	B	A	A	A	A	E	D	B	E	C	C	C	B	A	A	C	B	12	60.00	D
Tyrone Renolds	C	C	D	C	B	A	E	A	E	A	B	E	C	B	D	B	D	A	B	D	16	80.00	B
Cody Villafane	C	E	D	B	B	B	B	A	E	D	B	E	D	E	B	B	A	C	B	D	14	70.00	C
Guy Overlock	C	C	D	E	B	A	A	A	C	D	B	C	C	E	D	B	A	A	B	D	15	75.00	C
Selena Patman	D	D	B	B	C	A	C	A	E	A	C	E	D	E	E	E	B	E	A	D	10	50.00	F
Noreen Curlee	B	C	D	B	B	A	B	C	A	A	B	E	C	E	D	A	A	D	A	D	14	70.00	C
Eve Domer	C	C	D	C	E	A	A	A	E	C	B	E	C	E	D	B	C	A	B	E	14	70.00	C
Nita Rorie	C	C	D	C	B	A	E	A	E	A	B	E	C	B	D	B	D	A	B	D	16	80.00	B
Sandra Casner	C	C	C	C	B	A	C	E	E	A	B	C	E	E	D	B	A	A	B	D	14	70.00	C
Neil Freeberg	C	B	D	C	B	A	B	A	C	A	C	E	C	C	D	B	D	A	B	D	14	70.00	C
Clayton Rehm	C	C	E		E	A	B	A	E	E	B	E	E	E	C	B	A	A	B	D	14	70.00	C
Althea Whitis	C	C	D	C	B	A	E	A	E	A	B	E	C	B	D	B	D	A	B	D	16	80.00	B
Darren Boyea	C	C	D	C	B	D	A	A	A	A	A	E	C	E	D	A	A	D	D	D	12	60.00	D
Julio Ipock	C	C	D	C	B	A	E	A	E	A	B	E	C	B	D	B	D	A	B	D	16	80.00	B
Fernando Deemer	C	C	D	C	B	A	E	A	E	A	B	E	C			D	D	A			13	65.00	D
Lenore Sater	C	E	D	C	D	B	C	A	E	E	A	E	B	E	D	A		E	B	D	9	45.00	F
Loraine Olivar	B	C	D	A	A	A	E	B	E	A	B	E	C	E	D	B	B	A	B	D	14	70.00	C
<b>Percent Correct:</b>	78	65	78	26	65	74	30	87	65	74	74	87	70	65	78	74	48	70	78	83	13.70	68.48	D

# Condensed Test Report

**Legend:** Distractors Chosen More than Correct Answer: ■

<b>Total Possible Points:</b>	20	<b>Median Score:</b>	14	<b>Maximum Score:</b>	19
<b>Total Students:</b>	23	<b>Mean Score:</b>	13.70	<b>Minimum Score:</b>	9
<b>Standard Deviation:</b>	2.51	<b>Reliability Coefficient (KR20):</b>	0.42	<b>Range of Scores:</b>	10

No.	Question	Correct Answer	Response Frequencies					Non Distractor	Correct Group Responses			Point Biserial
			A	B	C	D	E		Total %	Upper 27%	Lower 27%	
1	Question1	C	0.00	17.39	<b>78.26</b>	4.35	0.00	AE	78.26	100.00	50.00	0.52
2	Question2	C	4.35	13.04	<b>65.22</b>	4.35	13.04		65.22	100.00	33.33	0.46
3	Question3	D	0.00	4.35	8.70	<b>78.26</b>	8.70	A	78.26	100.00	83.33	0.06
4	Question4	B	8.70	<b>26.09</b>	<b>43.48</b>	4.35	8.70		26.09	16.67	33.33	0.03
5	Question5	B	17.39	<b>65.22</b>	4.35	4.35	8.70		65.22	100.00	16.67	0.68
6	Question6	A	<b>73.91</b>	13.04	8.70	4.35	0.00	E	73.91	100.00	33.33	0.56
7	Question7	B	17.39	<b>30.43</b>	17.39	4.35	26.09		30.43	16.67	16.67	0.12
8	Question8	A	<b>86.96</b>	4.35	4.35	0.00	4.35	D	86.96	100.00	100.00	-0.05
9	Question9	E	17.39	4.35	8.70	4.35	<b>65.22</b>		65.22	83.33	50.00	0.09
10	Question10	A	<b>73.91</b>	0.00	4.35	13.04	8.70	B	73.91	100.00	66.67	0.16
11	Question11	B	8.70	<b>73.91</b>	8.70	4.35	4.35		73.91	100.00	16.67	0.76
12	Question12	E	4.35	0.00	8.70	0.00	<b>86.96</b>	BD	86.96	100.00	83.33	0.16
13	Question13	C	4.35	4.35	<b>69.57</b>	8.70	13.04		69.57	100.00	33.33	0.64
14	Question14	E	0.00	21.74	8.70	0.00	<b>65.22</b>	AD	65.22	16.67	83.33	-0.34
15	Question15	D	0.00	4.35	13.04	<b>78.26</b>	4.35	A	78.26	100.00	66.67	0.19
16	Question16	B	17.39	<b>73.91</b>	0.00	8.70	0.00	CE	73.91	100.00	33.33	0.64
17	Question17	A	<b>47.83</b>	4.35	8.70	26.09	8.70		47.83	16.67	50.00	0.01
18	Question18	A	<b>69.57</b>	0.00	8.70	13.04	4.35	B	69.57	100.00	33.33	0.60
19	Question19	B	4.35	<b>78.26</b>	4.35	8.70	0.00	E	78.26	100.00	50.00	0.31
20	Question20	D	0.00	4.35	0.00	<b>82.61</b>	8.70	AC	82.61	100.00	83.33	0.08

## Test Item Statistics Report

Question		Summary Statistics				Reliability		
Question	Points	Graded	Correct	Incorrect	No Response	Point Biseiral	Percent Correct	
Question1	1	23	18	5	0	0.52	78.26	<div style="width: 78.26%; background-color: blue; height: 10px;"></div>
Question2	1	23	15	8	0	0.46	65.22	<div style="width: 65.22%; background-color: blue; height: 10px;"></div>
Question3	1	23	18	5	0	0.06	78.26	<div style="width: 78.26%; background-color: blue; height: 10px;"></div>
Question4	1	23	6	15	2	0.03	26.09	<div style="width: 26.09%; background-color: blue; height: 10px;"></div>
Question5	1	23	15	8	0	0.68	65.22	<div style="width: 65.22%; background-color: blue; height: 10px;"></div>
Question6	1	23	17	6	0	0.56	73.91	<div style="width: 73.91%; background-color: blue; height: 10px;"></div>
Question7	1	23	7	15	1	0.12	30.43	<div style="width: 30.43%; background-color: blue; height: 10px;"></div>
Question8	1	23	20	3	0	-0.05	86.96	<div style="width: 86.96%; background-color: blue; height: 10px;"></div>
Question9	1	23	15	8	0	0.09	65.22	<div style="width: 65.22%; background-color: blue; height: 10px;"></div>
Question10	1	23	17	6	0	0.16	73.91	<div style="width: 73.91%; background-color: blue; height: 10px;"></div>
Question11	1	23	17	6	0	0.76	73.91	<div style="width: 73.91%; background-color: blue; height: 10px;"></div>
Question12	1	23	20	3	0	0.16	86.96	<div style="width: 86.96%; background-color: blue; height: 10px;"></div>
Question13	1	23	16	7	0	0.64	69.57	<div style="width: 69.57%; background-color: blue; height: 10px;"></div>
Question14	1	23	15	7	1	-0.34	65.22	<div style="width: 65.22%; background-color: blue; height: 10px;"></div>
Question15	1	23	18	5	0	0.19	78.26	<div style="width: 78.26%; background-color: blue; height: 10px;"></div>
Question16	1	23	17	6	0	0.64	73.91	<div style="width: 73.91%; background-color: blue; height: 10px;"></div>
Question17	1	23	11	11	1	0.01	47.83	<div style="width: 47.83%; background-color: blue; height: 10px;"></div>
Question18	1	23	16	6	1	0.60	69.57	<div style="width: 69.57%; background-color: blue; height: 10px;"></div>
Question19	1	23	18	4	1	0.31	78.26	<div style="width: 78.26%; background-color: blue; height: 10px;"></div>
Question20	1	23	19	3	1	0.08	82.61	<div style="width: 82.61%; background-color: blue; height: 10px;"></div>