

# Data Collection to Meet Evolving Needs

## OpScan® 6

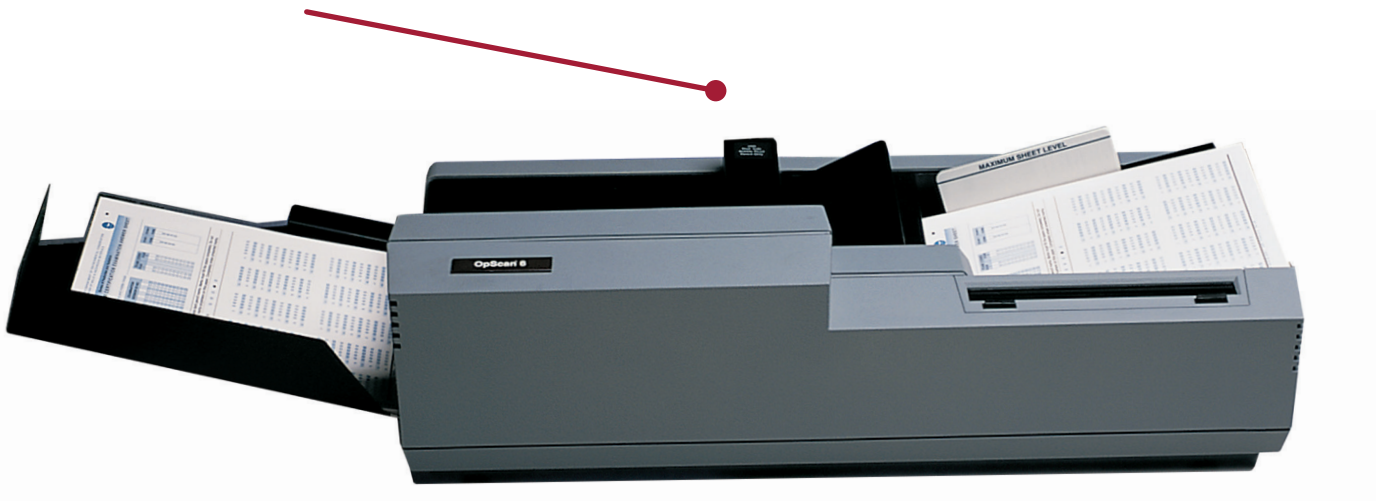
The OpScan® 6 optical mark recognition (OMR) scanner offers fast throughput and data transfer in a durable desktop model. Its flexible design allows for distributed or centralized processing. The OpScan 6 scanner enhances productivity by collecting and transforming data into useable information quickly and efficiently.

### **Superior Read Head Technology**

Digital read heads improve accuracy. Alerts when paper dust, eraser bits, etc. begin to build up and block read cells. Precisely positioned wiping surfaces flatten wrinkled and folded forms and automatically clean the read head.

### **Increased Accuracy**

Sixteen level mark discrimination differentiates erasures and smudges from valid marks. Two light sources for each read cell minimize the effect of folds and wrinkles in forms.



### **Monitor Progress**

Forty character, alphanumeric operator messages simplify operation. Data transmission occurs as each row is scanned for faster throughput.

### **Control scanning**

An open feed path provides sheet visibility at all times as well as easy access for sheet removal and transport cleaning. A fixed, automatic feed hopper for 300 sheets eliminates continual reloading.

## Scanner Applications

### Education

- Testing and assessment scoring
- Course scheduling
- Grade reporting
- Student, faculty & alumni surveys
- Admissions & enrollments
- Course/instructor evaluations

### Business, Healthcare & Government

- Job applications & member enrollments
- Time & attendance and payroll deductions
- Training and course evaluations
- Customer, employee, and patient surveys
- Vehicle registration & incident reporting
- Patient encounter & health risk appraisals

### Options

The OpScan 6 scanner is available with optional features:

- Dual-side reflective read head for faster two sided form scanning.
- Ink read heads to scan both pen and pencil.
- A programmable, interactive printer that prints information based on scanned data—such as error codes, alphanumeric messages, serial numbers, validation flags, and test scores—with no effect on the throughput rate.
- Bar code attachment delivers immediate, automatic bar code identification.
- Download capability permits ASCII coded output, which simplifies implementation when not using a PC.
- USB 2.0 with optional adaptor.

Product information is subject to change without notice.

## Technical Specifications

Physical Description	<ul style="list-style-type: none"><li>• Length: 21.25" (540 mm)</li><li>• Width: 14.5" (369 mm)</li><li>• Height: 9" (230 mm)</li><li>• Weight: 17 lbs. (7.71 kg)</li></ul>
Environment	<ul style="list-style-type: none"><li>• Operating Temperature: 60°-85° F (15.6°-29.4° C)</li><li>• Humidity: 40% to 60% relative; non-condensating.</li><li>• Heat Dissipation: 900 BTUs per hour nominal</li></ul>
Power	<ul style="list-style-type: none"><li>• Standard: 115 VAC +/-10% single phase; 60 Hz +/-5%; US 3-prong plug; 8 ft. cable; requires 15 amp dedicated circuit, single phase</li><li>• Option A: 50 Hz +/-5%; 100 or 110 VAC +/-10%; US 3-prong plug; 8 ft. cable; requires 15 amp dedicated circuit, single phase</li><li>• Option B: 50 Hz +/-5%; 220 or 240 VAC +/-10%; US 3-prong plug; 8 ft. cable; requires 7.5 amp dedicated circuit, single phase</li></ul>
Communications	<ul style="list-style-type: none"><li>• Asynchronous: Configurable protocol; two female RS232 connections. Communication Speed: 1,200 to 115,200 baud. Host Port: Local or remote connection. Auxiliary Port:</li><li>• Compatibility: Sentry 3000® scanner emulation mode. USB 2.0 with optional adaptor</li></ul>
Operation	2.5" x 5" to 9" x 14" (64 x 127 mm to 229 x 356 mm); 60-100 lb. (90-148 g/m <sup>2</sup> ) offset; uses both Mark Reflex and Trans-Optic forms. Form Input Capacity: Auto-feed 300 sheets. Output Stacker Capacity: 300 sheets main stacker. Controls: Two push button programmable switches. Message Display: 40 character, alphanumeric, fluorescent. Scanning Rate: Model 36—3,600 sheets/hour; Model 50—approx 5,000 sheets/hour. Programmable Interactive Printer
Components	<ul style="list-style-type: none"><li>• Read Head: 16 level mark discrimination; one or two sided reflective read; Scantron .166" format</li><li>• Form Transport: Automatic feed; open design</li></ul>
Software Interfaces	<ul style="list-style-type: none"><li>• ScanTools® Plus</li></ul>



**GET THE RESULTS YOU NEED TO MAKE INFORMED BUSINESS DECISIONS TODAY!**

For a free consultation to meet your organization's goals, call **800.722.6876** or visit us at **www.scantron.com** to learn more.

### About Us

Scantron® provides technology to help you collect data you can use. We offer solutions and services, delivered with the quality you expect from decades of experience. Whether you need to work on paper, online, or anywhere in between, Scantron can meet you where you are and help you get to where you want to be.

